



Indoor/Outdoor Applications



EOS LightShow **MAX** Mesh Displays

A multi-purpose LED mesh for small, large, or expansive surfaces. Suitable for both conventional lighting effects and streaming media, this lightweight and easy-to-install mesh is practical for both indoor and outdoor applications.

Brilliant color is achieved through the use of high-contrast, high-lumen LEDs perfect for lighting and full color video.

Constructed with aircraft cable and rugged plastic junctions for LED insertion. Connect segments with simple buckles.

Backed by a 5-Year Limited Warranty.



IP66



RGB



Flexible



Modular



Lightweight



UL LISTED

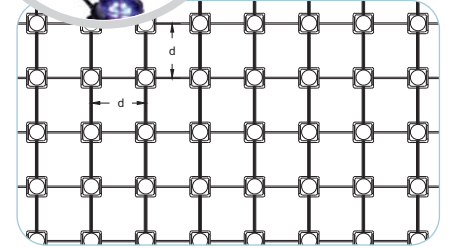


Specifications of a 4 Inch System

Standard Sizes & Specifications for a 4" Square Grid

| Size | 1 x 8 | 1 x 16 | 2 x 8 | 2 x 16 | 4 x 8 | 4 x 16 |
|---------------------------------|----------|--------|--------|--------|---------|---------|
| LED Array | 3 x 24 | 3 x 48 | 6 x 24 | 6 x 48 | 12 x 24 | 12 x 48 |
| LED Quantity | 72 | 144 | 144 | 288 | 288 | 576 |
| Power (W) | 72 | 144 | 144 | 288 | 288 | 576 |
| Weight (lbs) | 5 | 10 | 10 | 20 | 20 | 50 |
| Output, Clear 105° (lm) | 2160 | 4320 | 4320 | 8648 | 8640 | 17280 |
| Output, Translucent 165° (lm) | 1872 | 3744 | 3744 | 7488 | 7488 | 14976 |
| Brightness (nits) Clear / Trans | 1066/213 | | | | | |
| Transparency (%) | 66 | | | | | |

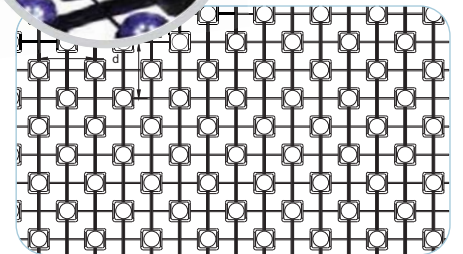
Chart above contains values that pertain to the color-changing nodes only. For equivalent LightShow MAX Mono node information, please contact factory.



Standard Sizes & Specifications for a 4" Diagonal

| Size | 1 x 8 | 1 x 16 | 2 x 8 | 2 x 16 | 4 x 8 | 4 x 16 |
|---------------------------------|------------|--------|---------|---------|---------|---------|
| LED Array | 6 x 24 | 6 x 48 | 12 x 24 | 12 x 48 | 24 x 24 | 24 x 48 |
| LED Quantity | 144 | 288 | 288 | 576 | 576 | 1152 |
| Power (W) | 144 | 288 | 288 | 576 | 576 | 1152 |
| Weight (lbs) | 10 | 19 | 19 | 37 | 37 | 73 |
| Output, Clear 105° (lm) | 4320 | 8640 | 8640 | 17280 | 17280 | 345560 |
| Output, Translucent 165° (lm) | 3744 | 7488 | 7488 | 14976 | 14976 | 14976 |
| Brightness (nits) Clear / Trans | 2131 / 426 | | | | | |
| Transparency (%) | 43 | | | | | |

Chart above contains values that pertain to the color-changing nodes only. For equivalent LightShow MAX Mono node information, please contact factory.



Features



APPEARANCE

Plain, black, white, or custom



POWER AND DATA

Remote power and data supplies up to 100 feet from LED



STANDARD SIZES

1 to 4 foot widths; 4 to 120 foot lengths



DIFFUSION

Clear (105°) or Translucent (Frosted, 165°)



EASE OF INSTALLATION

Lightweight, built-to-it sections of mesh shipped ready for install. No trimming or cutting necessary on site.



STIFFNESS

Systems are constructed of flexible aircraft cable, rigid rod, or a hybrid of the two



Ordering Guide

| TYPE | LED | SPACING (INCHES) | PATTERN | SKELETON COLOR | LENS TYPE | WIRE/NODE COLOR | WIDTH (FEET) | LENGTH (FEET) |
|------|-----|------------------|---------|----------------|-----------|-----------------|--------------|---------------|
| | | | | | | | | |

A TYPE

- F - Flexible
- R - Rigid
- H - Hybrid

Hybrid systems require coordination with an EOS representative

B LED

CX - LightShow MAX Color-Changing, 1W/node, 13-30lm/node

MX - LightShow MAX Mono, 1W/node, 35-87lm/node, static white offered in 2700, 3000, 3500, 4000, 5000, 5700, 6500K

TX - LightShow MAX Tunable, 1W/node, 28-80lm/node, tunable white from 2700-6500K

C SPACING (inches)

- 03 - 3 Inches
- 04 - 4 Inches

.
.
.

24 - 24 Inches

3 inch minimum
24 inch maximum

Spacings not listed may be available but require additional coordination.

Fractional spacing within range available upon request. Consult factory.

Metric values also available.

D PATTERN

- S - Straight
- D - Diagonal

Diagonal patterns doubles the density of a straight pattern having the same spacing

E MESH COLOR

- B - Black
- C - Clear
- W - White
- RAL - Custom

Custom RAL skeleton colors available upon request

F LENS TYPE

- 1 - Translucent Flat
- 2 - Translucent Dome
- 3 - Clear Flat
- 4 - Clear Dome

G MODULE & WIRE COLOR

- B - Black
- C - Clear
- W - White

Custom wire colors available upon request (with extra lead time and subject to MOQ).

H WIDTH (Feet)

- 01
- 02
- 03
- 04

Custom widths and lengths available upon request, and require coordination with RGB

I LENGTH (Feet)

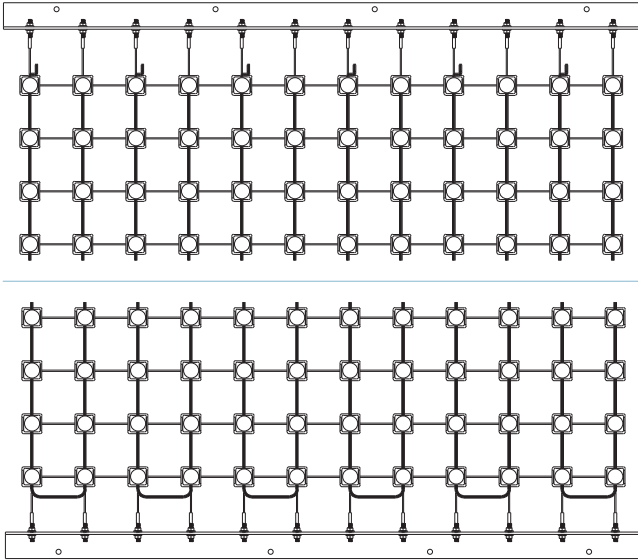
- 04
- 08
- 12
- 16

Additional increments of 4 feet

Custom widths and lengths available upon request, and require coordination with RGB
12 Foot max for Rigid
20 Foot maximum for 4-inch spacing
60 Foot maximum for 12-inch spacing



Mounting - Wall

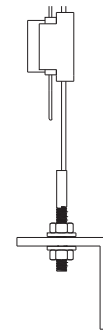


Angle profile for attachment to substrate via provided mounting points.

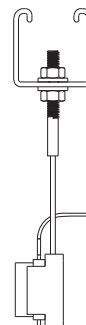
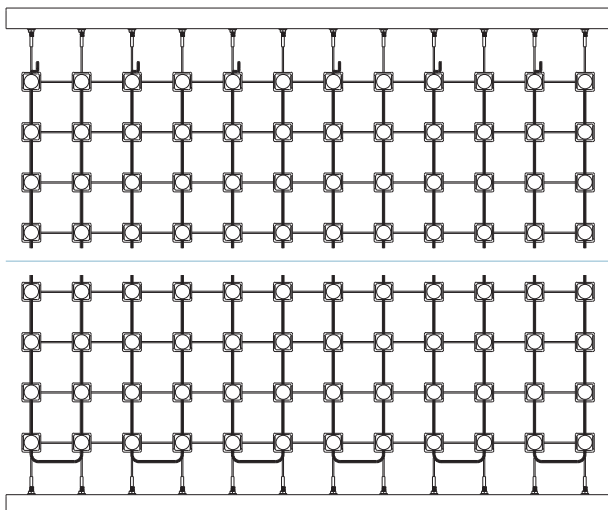
Mesh terminated with threaded plugs (1/4-20 or 1/4-28) and secured to angle with nut and washer assembly.

Bottom of mesh anchored to surface with similar angle profile.

Size, thickness, and material of angle subject to review pending panel length and weight.



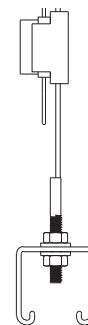
Mounting - Ceiling / Free-Hang



Strut-type profile for attachment to structural member.

Mesh terminated with threaded plugs (1/4-20 or 1/4-28) and secured to strut profile with nut and washer assembly.

Bottom of mesh anchored to structural member with similar strut-type profile.



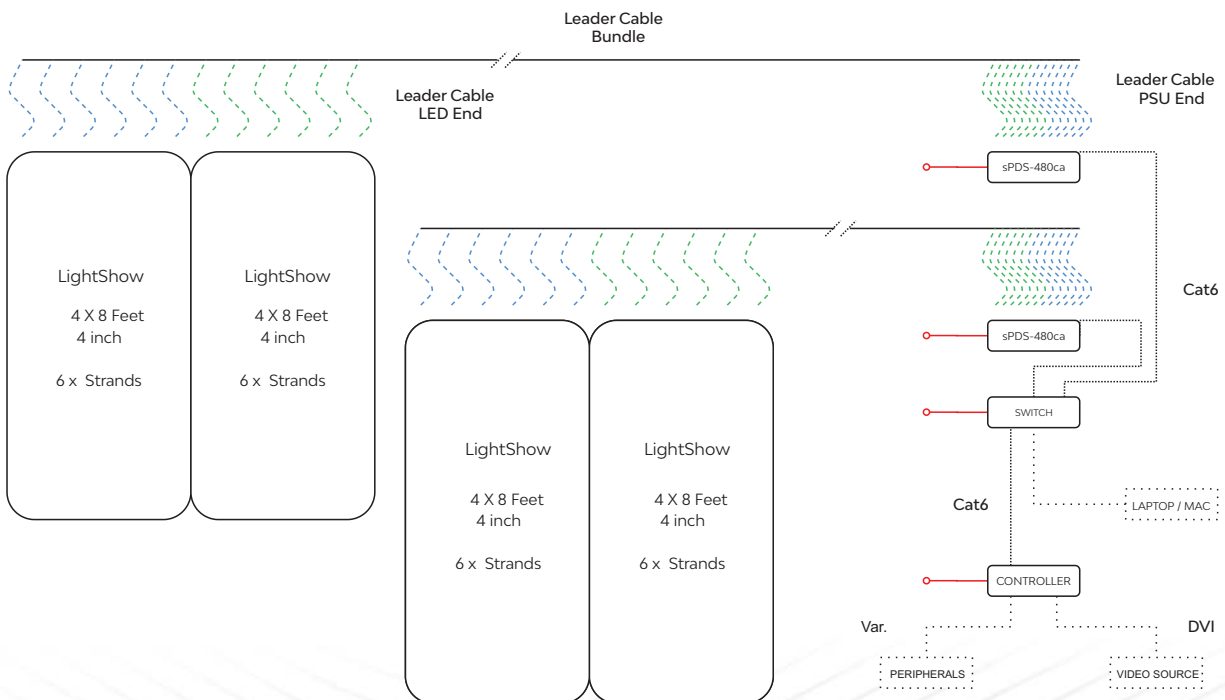
For ceiling or high-wind free-hanging applications, proper tension must be applied to a system



Ancillary Components

| PART NUMBER | DESCRIPTION |
|-----------------|--|
| PS-SPDS480-24 | 16 Port Power & Data Supply, 24VDC Output, 100 - 240VAC, 480W, Indoor Use, (UL / cUL) <i>Rack-mount power and data supply. 2RU equipment height requiring 3RU space. Ethernet only.</i> |
| PS-PDS60-24 | 2 Port Power & Data Supply, 24VDC Output, 100 - 240VAC, 60W, Outdoor Use, (UL, cUL) <i>Surface-mount power and data supply. Ethernet & DMX.</i> |
| PS-CM1504D-24 | 2 Port Control Module, 24VDC Input / Output, 150W, DIN-Rail, Indoor Use (RU) <i>Requires 7.5VDC power source. Din-rail-mount control module. Ethernet & DMX.</i> |
| PS-CM1504IP-24 | 2 port Control Module, 24VDC Input / Output, 150W, Outdoor Use (UL, cUL) <i>Requires 7.5VDC power source. Surface-mount control module. Ethernet & DMX.</i> |
| PS-WMCC-1200-24 | Control Cabinet, 100 - 240VAC / 200 - 480VAC, 1200W, Indoor / Outdoor (508a) <i>Requires installation by competent individuals. Intended for use in large-scale architectural applications. Suitable for wall mount applications. Ethernet & DMX.</i> |
| SLC25 | Power & Data Leader Cable, 25 Ft |
| SLC50 | Power & Data Leader Cable, 50 Ft |
| SLC100 | Power & Data Leader Cable, 100 Ft |

System Layout



System layouts vary based on quantity of connections per panel and total panel count