

Project Spotlight – Hotel Chicago



BASIC LightPanel™ System

Application: Hospitality - Architectural

Location: Hotel Lobby

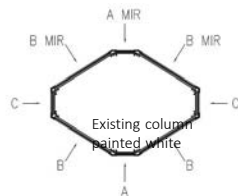
Backlit Material: Laser Cut Metal

Product Used: Light Panel Frameless with Diffuser

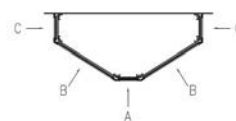
Output: Standard -12V – 2 side LED

Color Temperature: 4400K

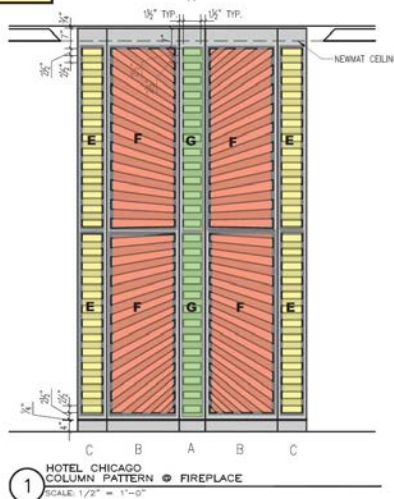
Power Source: Hardwired-Multiple Drivers-MLV 300W/12VDC



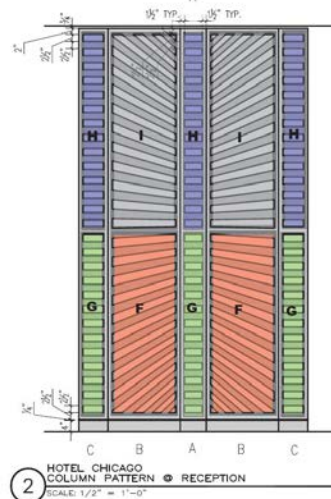
Lobby Column
(4) Panel E - 8 1/4" x 65"
(8) Panel F - 24 1/4" x 65"
(4) Panel G - 7" x 65"



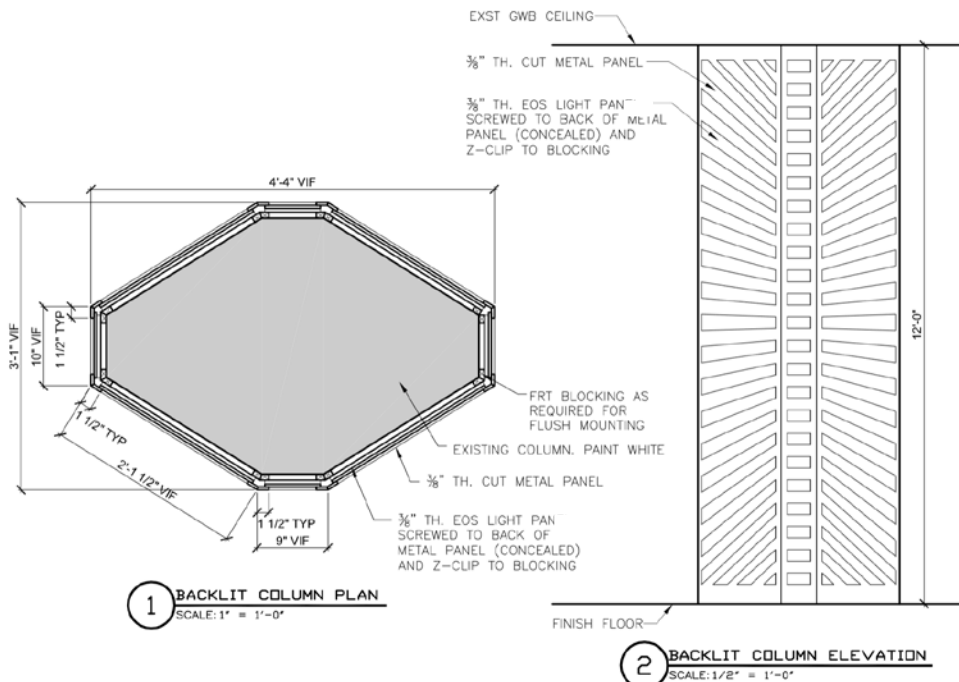
Reception Column
(2) Panel F - 24 1/4" x 65"
(3) Panel G - 7" x 65"
(3) Panel H - 8 1/4" x 69 3/4"
(2) Panel I - 24 1/4" x 69 3/4"



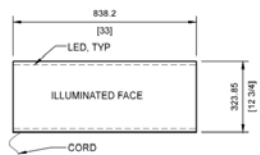
1 HOTEL CHICAGO COLUMN PATTERN ● FIREPLACE
SCALE: 1/2" = 1'-0"



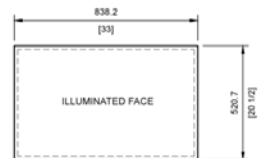
2 HOTEL CHICAGO COLUMN PATTERN ● RECEPTION
SCALE: 1/2" = 1'-0"



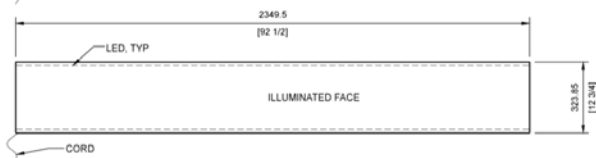
Architectural Detail
 Provided by Architect or Designer



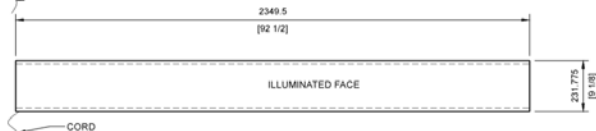
PANEL D	
TYPE	EOS LIGHT PANEL SYSTEM - CUSTOM CUT
QTY.	2
SIZE	33" X 12 3/4"
LED PLACEMENT	2
SIDE ILLUMINATED	1
COLOR	4500K DAYLIGHT



PANEL C	
TYPE	EOS LIGHT PANEL SYSTEM - CUSTOM CUT
QTY.	4
SIZE	33" X 20 1/2"
LED PLACEMENT	4
SIDE ILLUMINATED	1
COLOR	4500K DAYLIGHT



PANEL B	
TYPE	EOS LIGHT PANEL SYSTEM - CUSTOM CUT
QTY.	2
SIZE	92 1/2" X 12 3/4"
LED PLACEMENT	2
SIDE ILLUMINATED	1
COLOR	4500K DAYLIGHT



PANEL A	
TYPE	EOS LIGHT PANEL SYSTEM - CUSTOM CUT
QTY.	4
SIZE	92 1/2" X 9 1/8"
LED PLACEMENT	2
SIDE ILLUMINATED	1
COLOR	4500K DAYLIGHT

Basic LightPanel™ System
 Drawings Provided by EOS