

---

# Case Study

## Bricken Arcade

### New York City



#### Project Bricken Arcade – Two Adjoining Building Lobbies

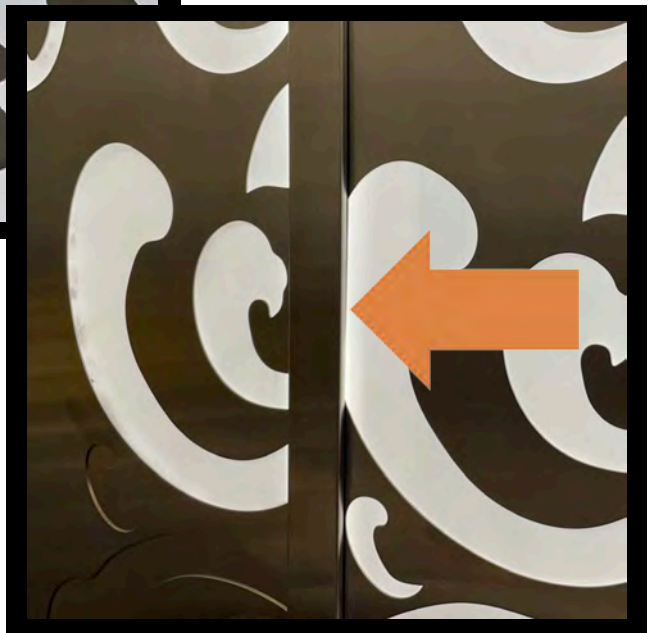
The Bricken Arcade project is an interesting example of how the new Deco LightPanel complete solution by EOS Light eliminates installation hassles and confusion, while resulting in superior and stellar installations – and how it further beautifies even upscale and historically-significant, high-profile public spaces.

---

Up until now, the classic challenge with backlit metal pattern material in architectural spaces has been the *integration* between separately-sourced materials from two different suppliers. On the one hand, you have the lighting supplier (e.g. EOS Light), and on the other hand you have the separate metal pattern supplier.

The metal raw materials have not typically been manufactured with the lighting in mind, so developing a solution for them to work together on a case-by-case basis for every new project can be a very time-consuming challenge.

In this lobby case study, you'll notice that, in the process of installing the materials, there had been a challenge with the brightness of LEDs along the frame edging of the metallic patterns, as well as trying to be sure they were fully obscured and invisible behind the separate segments of metal. These obstacles were overcome, but it added time and effort to the job.





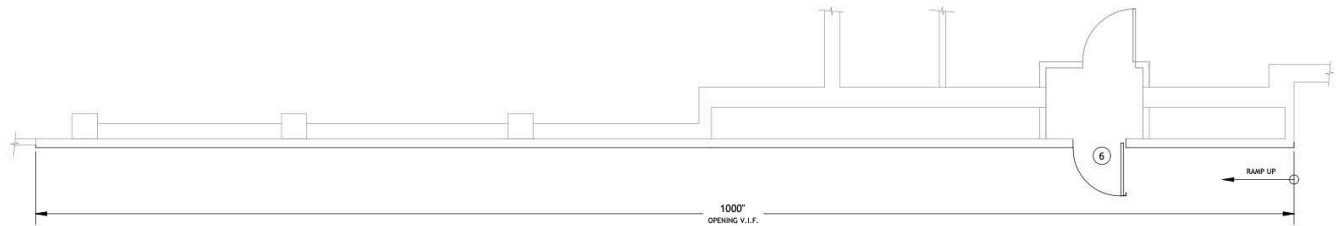
Ultimately, as you can see from the photographs, the job did end up looking wonderful for this conjoined lobby of two historic New York City buildings.

However, this backlit metal pattern job preceded the availability of our turnkey complete lighting solution, so the installers needed to work with independent materials from multiple sources. Without EOS Deco LightPanels, it was not without its installation issues that could've been minimized or completely eliminated... Just unbox Deco LightPanels, plug them in and hang them. No assembly required. No coordination with more than one supplier. EOS has already done all of the legwork to reduce confusion and save time. Why reinvent the wheel?

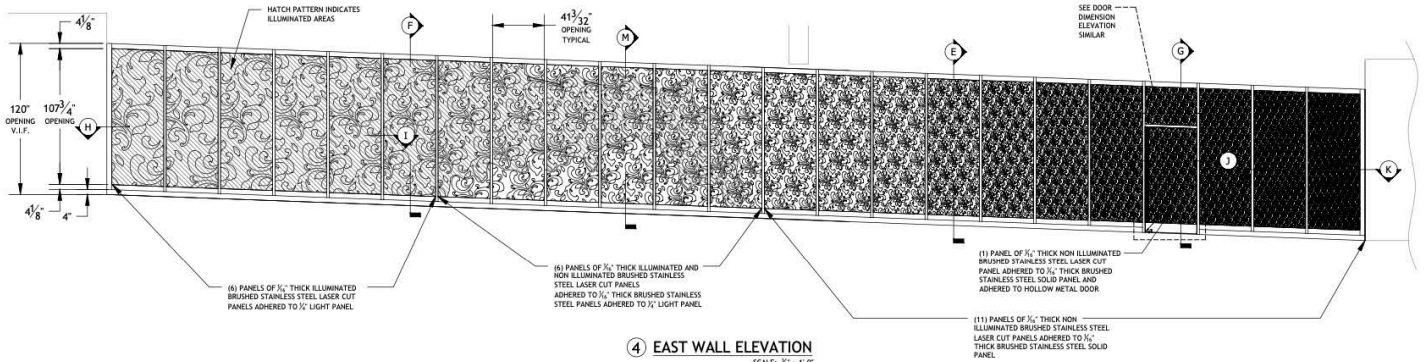
Select your pattern from our catalog of hundreds or submit your own custom pattern, choose indoor or outdoor light panels, or Color Tuning, Dim-to-Warm, RGB or RGBW. Pick a metal finish color or provide a RAL number. Indicate your dimensions or even specify situations where there is a slanted portion of your wall, or an area where sprinklers or fire alarm must protrude. We can work around all of these customizations to deliver a finished product out of the box that makes installation a breeze.

Now, with Deco LightPanels, gorgeous results like the ones you see here can be yours simply, quickly and affordably!



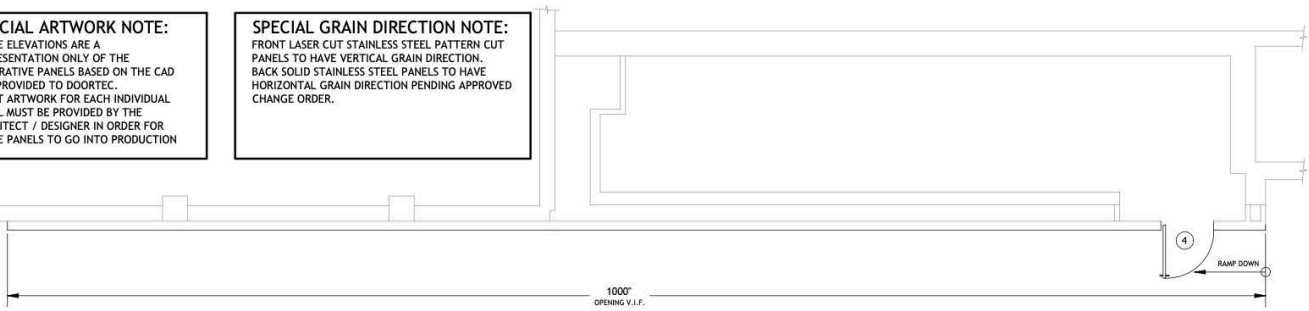


**EAST WALL PLAN VIEW**  
SCALE:  $\frac{1}{2}" = 1'-0"$

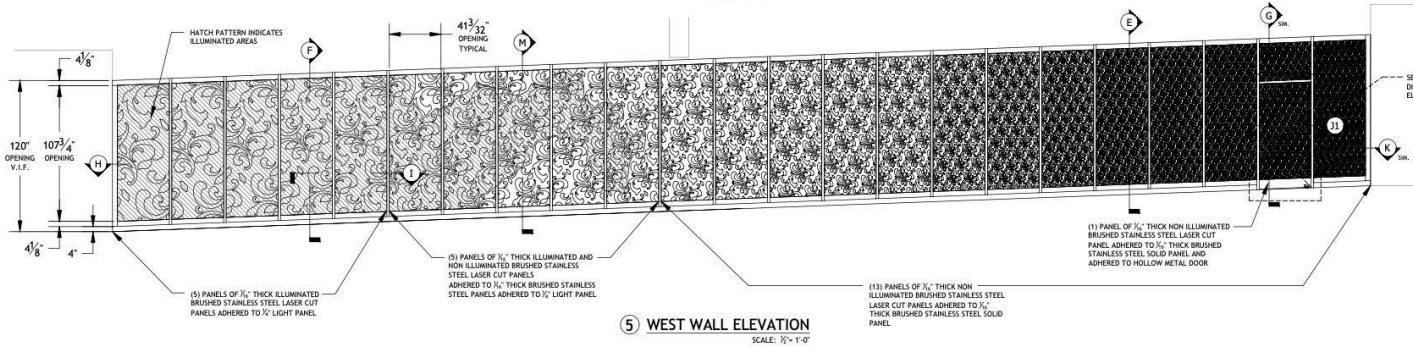


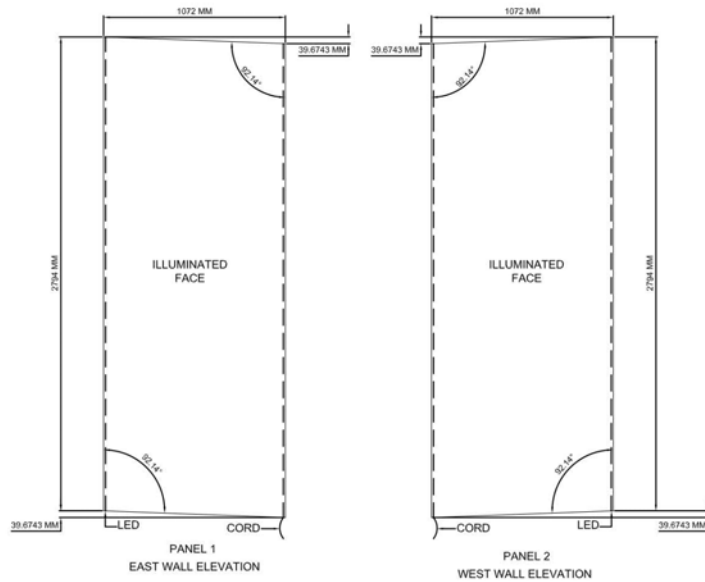
**SPECIAL ARTWORK NOTE:**  
THESE ELEVATIONS ARE A REPRESENTATION ONLY OF THE DECORATIVE PANELS BASED ON THE CAD FILE PROVIDED TO DOORTEC. EXACT ARTWORK FOR EACH INDIVIDUAL PANEL MUST BE PROVIDED BY THE ARCHITECT / DESIGNER IN ORDER FOR THESE PANELS TO GO INTO PRODUCTION

**SPECIAL GRAIN DIRECTION NOTE:**  
FRONT LASER CUT STAINLESS STEEL PATTERN CUT PANELS TO HAVE VERTICAL GRAIN DIRECTION. BACK SOLID STAINLESS STEEL PANELS TO HAVE HORIZONTAL GRAIN DIRECTION PENDING APPROVED CHANGE ORDER.



**WEST WALL PLAN VIEW**  
SCALE:  $\frac{1}{2}" = 1'-0"$





RFQ: 21160

PANEL 1	MODEL NO: LF-12-110-43-SP
TYPE	AF29
QTY.	12
SIZE	2794 MM X 1072 MM X 9 MM
LED PLACEMENT	2
SIDE ILLUMINATED	1
COLOR	4400K
VOLTAGE	12 V
WATTAGE	92 W

PANEL 2	MODEL NO: LF-12-110-43-SP
TYPE	AF29
QTY.	10
SIZE	2794 MM X 1072 MM X 9 MM
LED PLACEMENT	2
SIDE ILLUMINATED	1
COLOR	4400K
VOLTAGE	12 V
WATTAGE	92 W

REV	DESCRIPTION	REVISIONS	ECN	ECR	DATE	APP
-----	-------------	-----------	-----	-----	------	-----

#### EAST WALL PANELS

PRODUCT CODE:	PRODUCT CODE: LP-SP-108 X 41.25-2SL-DW-DHW
PANEL #:	PANEL 1,2,4,5,6,8,9,10,12
TYPE	EOS LIGHT PANEL SYSTEM
QTY.	9
SIZE	108" X 41.25" X 0.375"
LED PLACEMENT (EDGES)	2
FACES ILLUMINATED	1
COLOR	4400K - DAYLIGHT WHITE
VOLTAGE	12 V
WATTAGE	90 W

PRODUCT CODE:	PRODUCT CODE: LP-SP-108 X 41.3125-2SL-DW-DHW
PANEL #:	PANEL 3,7,11
TYPE	EOS LIGHT PANEL SYSTEM
QTY.	3
SIZE	108" X 41.3125" X 0.375"
LED PLACEMENT (EDGES)	2
FACES ILLUMINATED	1
COLOR	4400K - DAYLIGHT WHITE
VOLTAGE	12 V
WATTAGE	90 W

<input type="checkbox"/> APPROVED	<input type="checkbox"/> REVISE AND RESUBMIT	<input type="checkbox"/> REJECTED	APPROVED BY:	DATED:
-----------------------------------	--	-----------------------------------	--------------	--------

UNLESS OTHERWISE SPECIFIED DIMENSIONS ARE IN INCHES	APPROVALS	DATE:
DECIMALS: X ± .063	DRAWN: ADV	12.07.15
.XX ± .031	CHKD:	
.XXX ± .015	ENGR:	
ANGLES: ± 1/2"		
HOLES: UNDER .500 ± .005		
OVER .001 ± .010		
FINISH:		

PROJECT NUMBER: 21160  
PROJECT TITLE: 14079 BRICKEN LOBBY  
KAHN ARCHITECTURE & DESIGN



PART NO.	SIZE	DWG NO.	REV
	A		
SCALE	1:50	SHEET	1 OF 2

DO NOT SCALE PRINT

THE ACCOMPANYING FILES ARE SUPPLIED AS A MATTER OF COURTESY. THE DATA IS PROVIDED "AS IS" WITHOUT WARRANTY OF ANY KIND EITHER EXPRESSED OR IMPLIED. ANY PERSON(S) OR ORGANIZATION(S) MAKING USE OF OR RELYING UPON THIS DATA, IS RESPONSIBLE FOR CONFIRMING ITS ACCURACY AND COMPLETENESS. DUE TO A PROGRAM OF CONTINUOUS IMPROVEMENT, WE RESERVE THE RIGHT TO MAKE ANY VARIATION IN DESIGN OR CONSTRUCTION TO THE EQUIPMENT DESCRIBED. THIS DRAWING IS THE PROPERTY OF EOS AND CONTAINS PRIVILEGED OR CONFIDENTIAL INFORMATION. YOU WILL NOT DISCLOSE, USE, DISSEMINATE, DISTRIBUTE OR COPY THIS DRAWING FOR PURPOSES OTHER THAN WHAT IT IS INTENDED FOR.

B

A

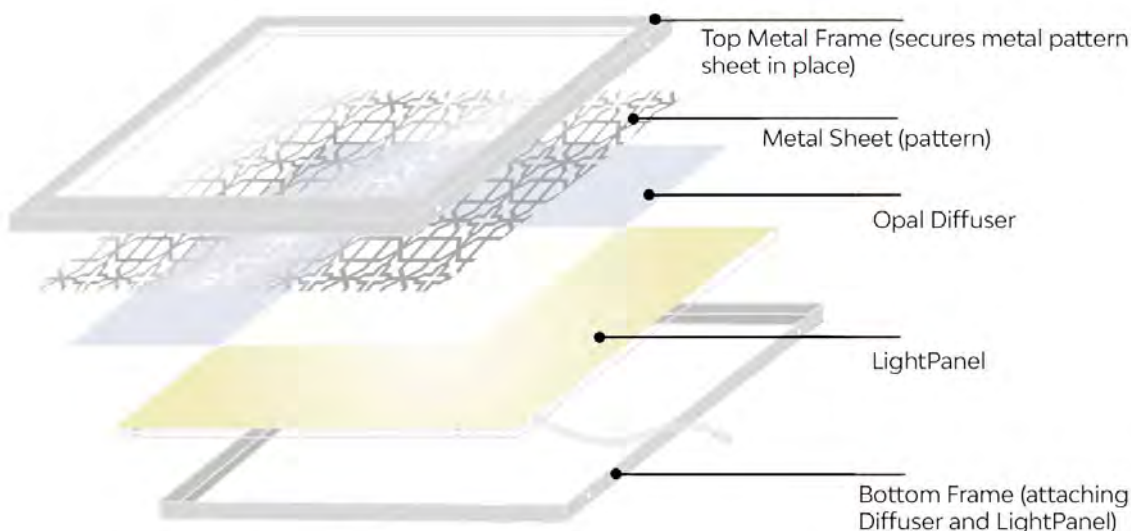
A



# Deco LightPanel

## Complete Solution

Deco LightPanels are the latest in a series of complete EOS solutions that are made-to-order at the factory and arrive at a job site ready to install, with no partial assembly required. Just unpack and hang these beautifully-textured, backlit metallic sheets. Custom or standard shapes and finishes.



The unique design of The DECO LightPanel allows use in a large number of applications:



Hospitality



Retail



Healthcare



Residential



Accent Lighting



Branding



Commercial Interior



Logos and Signage



Commercial Exterior



Custom Fixtures



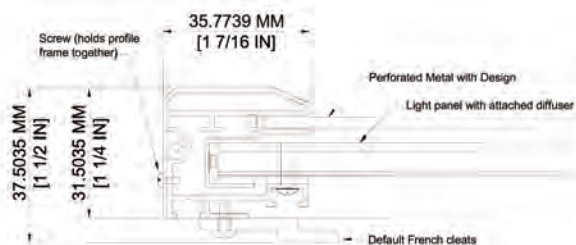
## General Specifications

### LIGHT WEB TECHNOLOGY™ :

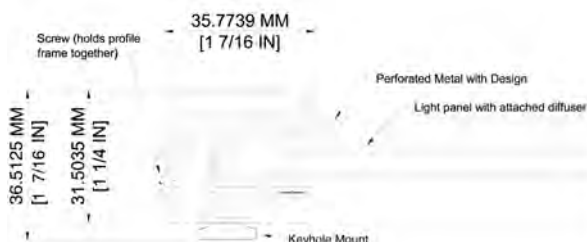
3D etched patterns to evenly distribute light throughout the panel. Patterns available are GRID, DOT and MICRODOT™

### THICKNESS:

1.5" with default French Cleats (cross section below)



1.44" with keyhole mounts (cross section below)



### MAXIMUM SIZE AND PROPORTIONS:

Ceiling Applications: 120"H x 48"W  
Wall Applications: 120"H x 80"W

### POWER OPTIONS:

24VDC Standard and 24VDC High Power

### DRIVER INPUT VOLTAGE :

100V TO 480V

### LONG LIFE :

Over 50,000 hours = Nearly 12 years based on 12 hours a day. Once installed, the LightPanel System is virtually maintenance free.

### WATTAGE :

4.3 W/Ft. - 24V Standard Power (Optional: 12V)  
5 W/ Ft. - 24V - High Power  
\*ask EOS specialist for information on RGB, RGBW and Color Tuning options.

### DIMMABLE :

The system is dimmable to <10% when matched with Dimmable Power Supplies

### LEDs :

ANSI Binned LEDs from Tier 1 Suppliers  
LED CRI > 80  
LED CRT - 1800K - 7500K

### WIRE GAUGE:

20GA Wiring for White and Color Tuning Panels, 24GA for Color

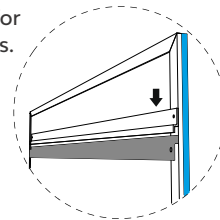
### DAMP LOCATION :

All Panels are Damp Location Rated when driven with a Class 2 Power Supply

### SERVICE AND INSTALLATION :

The Deco LightPanel is field serviceable, typically LEDs can be replaced in the field.

The Deco LightPanel comes with standard French Cleat wall mounting with the cleats pre-installed, however, optional suspension mounts are also available for ceiling applications.



## Optional Specifications



### COMPATIBLE POWER SUPPLIES :

- 0-10V dimming • DMX/DALI
- Electronic low voltage (ELV)
- RF Dimmable Plug In
- Inline Dimmable Plug-In



### OUTPUT OPTIONS:

24V Standard Power or 24V High Power available. 12V available upon request



### COLOR TEMPERATURES :

- 1800K • **2400K** • **2700K** • **3000K**
- 3500K • **4000K** • 5000K
- **6000K** • RGB, RGBW and Color Tuning options available

\*formerly 5300K

**Bolded** colors are commonly available in stock.



### APPROVALS AND CERTIFICATIONS:

The System is UL listed for Architectural applications and UL recognized for signage. All power supplies are UL / ETL listed.



<https://eostlight.com/user-guide/>



DOWNLOAD OUR  
USER GUIDE FOR WIRING &  
INSTALLATION INSTRUCTIONS





# Product Specification Ordering Form

NAME:

PROJECT NAME:

ADDRESS:

PHONE:

PROJECT LOCATION:

CITY:

EMAIL:

ANTICIPATED DELIVERY DATE:

ZIP CODE:

COMPANY NAME:

PROJECT SPECIFIER:

RUSH PROJECT: ☐ Yes ☐ No

A	B	C1	C2	D	E	F	G	H	I	J	K	L	M	N
↓	↓	↓	↓	↓	↓	↓	↓	↓	↓	↓	↓	↓	↓	↓
FIXTURE TYPE	VOLTAGE	DIMENSIONS (INCHES) TOP SIDE		LED SIDES	COLOR TEMP	LED POWER	CORD LENGTH	CORD LOCATION	CORD COLOR	POWER SUPPLY	PROJECT #	METAL PATTERN	METAL FINISH	REV #
DC	24V	98	65	4SL	4000	SPDIF	SC	TL BR	BC	010V	26887	A2	BK	1

## A FIXTURE TYPE

DC - DECO LightPanel

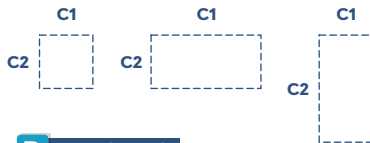
## B VOLTAGE

24V - 24V (Standard)  
12V - 12V (Optional)

## C DIMENSIONS

(Generated by Client)

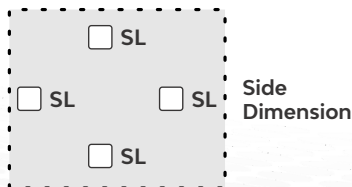
C1- Top Dimension  
C2- Side Dimension



## D LED SIDES

1SL - One Side  
2SL - Two Sides  
3SL - Three Sides  
4SL - Four Sides

Top Dimension



Side Dimension

\*Please note, the longest length is typically the LED side when selecting 1SL or 2SL

## E COLOR TEMP

2400 - 2400K RGB - Color Changing  
2700 - 2700K RGBW - Color Changing + White (6000K, 4000K, 2700K)  
3000 - 3000K  
3500 - 3500K  
4000 - 4000K CT- Color Tuning (2400K to 6000K)  
5000 - 5000K  
6000 - 6000K

## F LED POWER

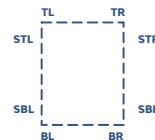
SPDIF- Standard Power with Diffuser  
HPDIF- High Power with Diffuser

## G POWER CORD LENGTH

SC - Standard -9.8 ft.  
CC\_ - Custom Length \_\_\_\_ ft

## H POWER CORD EXIT

TL - Top Left Corner BL - Bottom Left Corner  
TR - Top Right Corner BR - Bottom Right Corner  
STL - Side Top Left Corner SBL - Side Bottom Left Corner  
STR - Side Top Right Corner SBR - Side Bottom Right Corner



## I POWER CORD COLOR

BC - Black WC - White

## J POWER SUPPLY INFO

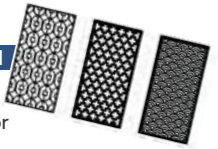
010V - 010V Dimmable Hardwire  
ELV - Electronic Low Voltage Dimmable Hardwire  
DMX - DMX /DALI  
PI - Plug In, DC Jack  
DPI - Dimmable Plug in w/ remote  
HW - Non-Dimmable Hardwired

## K PROJECT#

Enter the EOS Project Number Here

## L DECO METAL PATTERN

Refer to the Separate "Deco LightPanel Brochure" online or via the QR Code below to identify your Metal Pattern. Use "C" for Custom, Supplied Pattern.



## M DECO METAL FINISH

BK - Black CP - Copper  
WH - White GR - Graphite  
NB - Navy CR - Cream  
GD - Gold GR - Grey  
WN - Wine NK - Naked

RAL\_ - Custom RAL # (Contact EOS for lead time based on required sample to be provided)

## N REVISION#

Enter the Project's Revision Number Here



