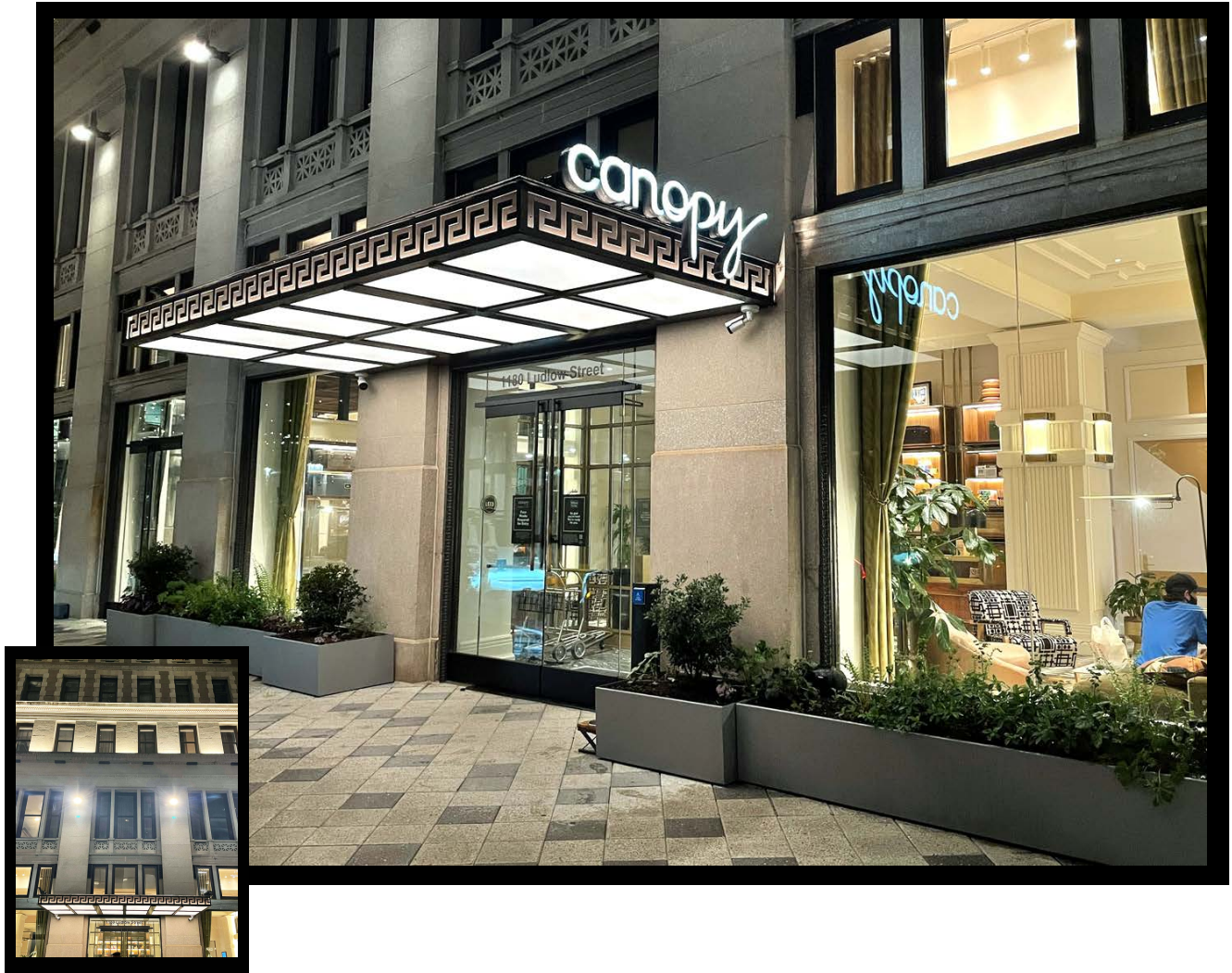

Case Study

Historical Building Entrance



This thirteen-story, historic building was built 125 years ago with a majestic, impressive and classic look by a wealthy philanthropist of the day. No expense was spared in its construction with use of grey brick, terra cotta, and Indiana limestone, and with polished granite columns.

So, in 2020, when it came to the renovation of the property for use as a new boutique hotel's entrance, it was crucial to select only the most reliable, experienced and capable of lighting partners. EOS Light was proud to be selected for the very entrance of the hotel, the first thing anyone sees as they approach.

The lighting designer worked with EOS Light to select the perfect LightPanel solution for the outdoor awnings – Outdoor Cloud Luminaires comprised of 12 oversized custom-sized fixtures (approx 30" x 40" each).

Our Outdoor Cloud Luminaires were precisely sized and fitted to the existing architecture, perfectly integrating with the building design and renovation intent.

Another absolute requirement of this installation was that the bronze finish of the existing architecture be matched. So, EOS obtained a sample of the bronze from the building and powder-coated the Cloud Luminaire frames to perfectly match.



The results were brilliant, and the client was duly impressed – so much so that the entrance installation has been featured prominently on hotel marketing and promotional advertising ever since.





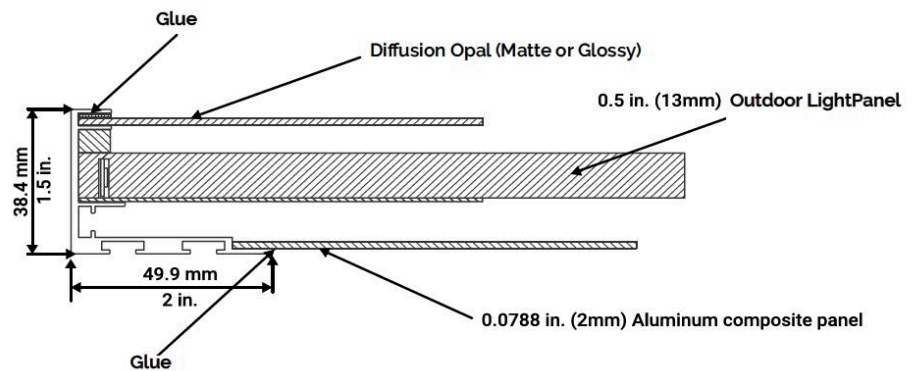
Architectural Details
provided by client.



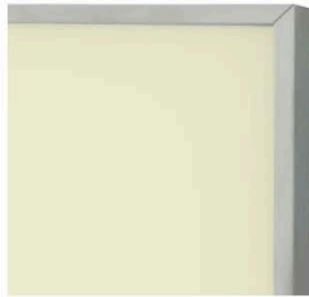
Outdoor Cloud Luminaire

FEATURES :

- Single Sided Illumination
- Medium and Small Sizes
- Low Power
- Easy Installation and assembly with standoffs



Back of CLOUD MEDIA FRAME



Front of CLOUD MEDIA FRAME



Suspended CLOUD MEDIA FRAME
by rigid poles

