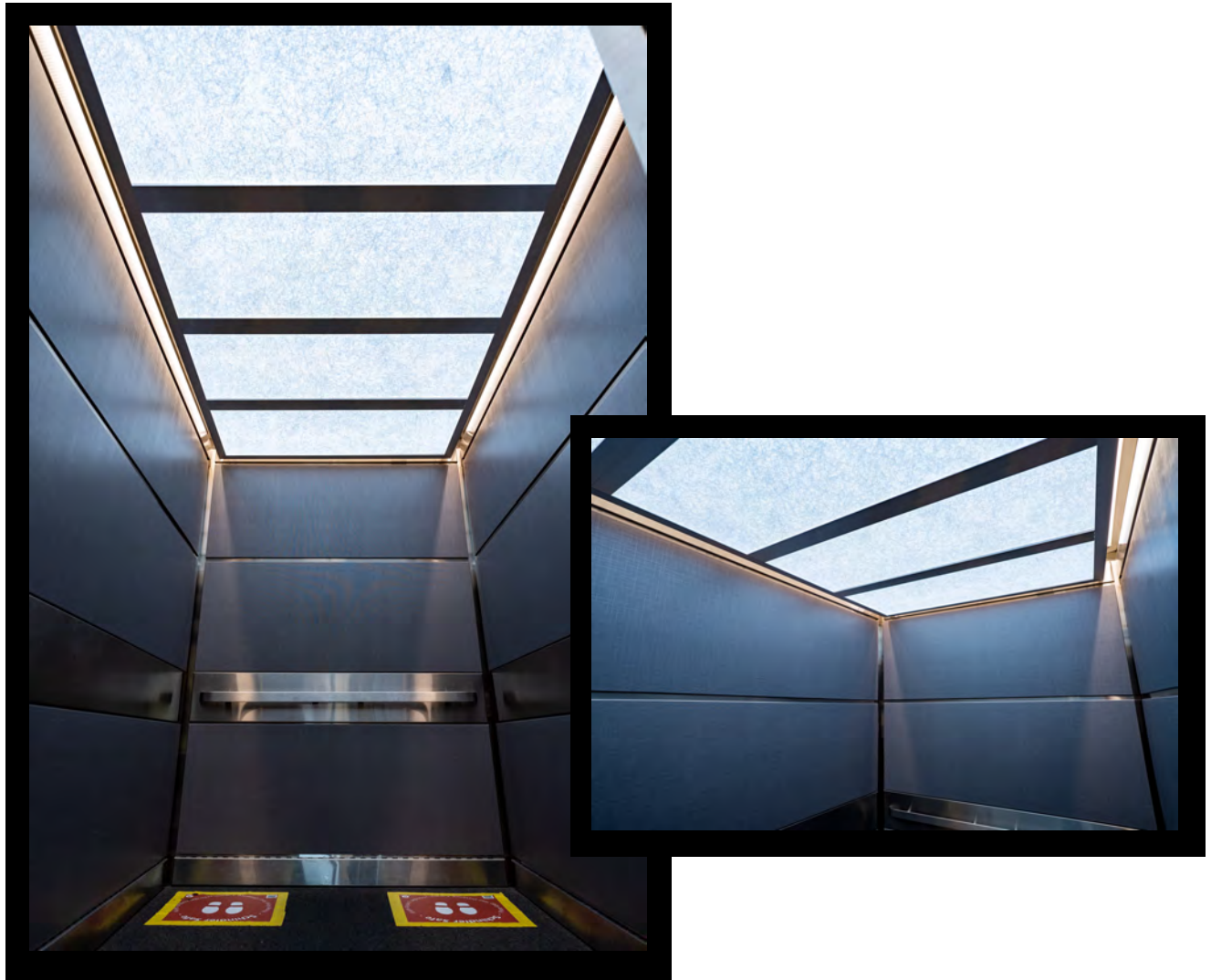


---

# Case Study

## Wesley Medical Plaza

### Wichita, KS

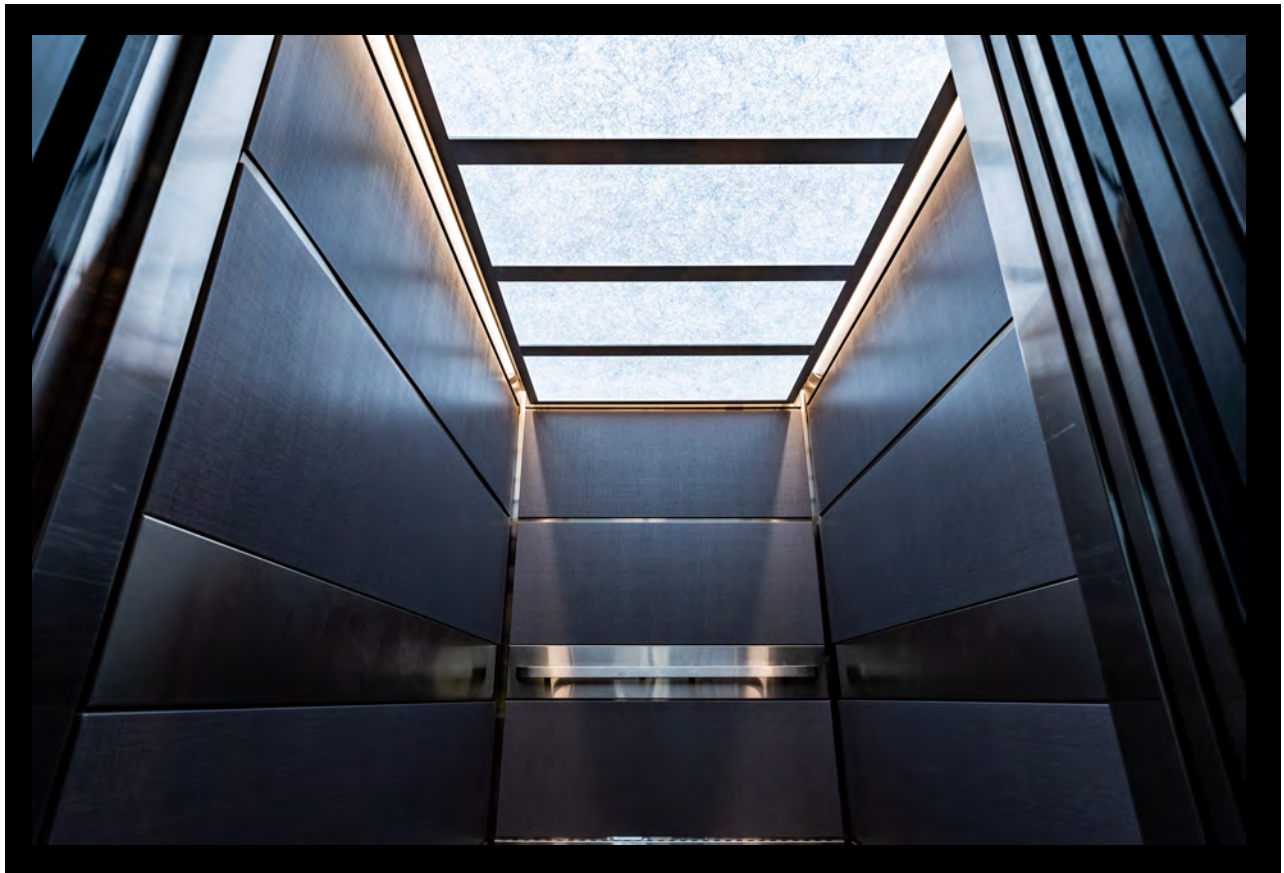


Project Health Strategies – Shell Project (1st & 2nd floor remodel)

EOS Light has amply demonstrated creative use of beautifying, architectural LightPanels and LightPaper in large scale and high profile outdoor installations all over the country and the world. But our solutions are versatile enough to be used in small scale interior spaces, too. Anyplace you can imagine, EOS Light can help!

---

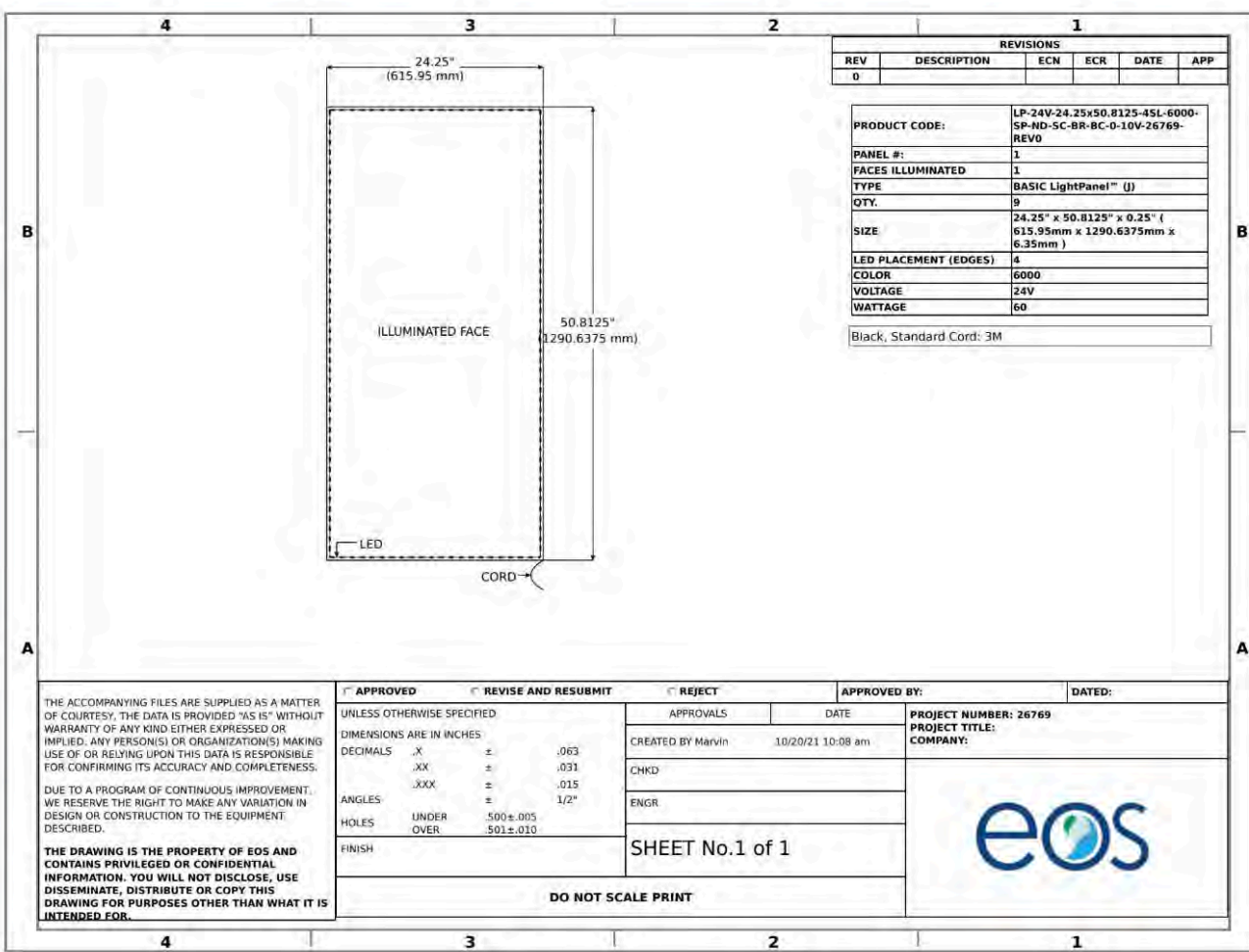
Here is one example, for instance, of how four panels were used in each of three elevators in the Wesley Medical Plaza property in Wichita, Kansas, to bolster the impressions of their space during a first and second floor remodel of public areas and infrastructure.



The architect chose translucent ceiling EOS Basic LightPanels for an interestingly designed accent look, and then supplemented the elevators with strip lighting – to look modern and bright.

These images from the final installation speak for themselves in terms of the huge impact EOS Light LED backlighting solutions can make to any space – big or small, indoor or outdoor, with different color temperatures of RGB/RGBW/DTW or Tunable White also available.

Example factory drawing (below) that makes review & approval of EOS Light custom LightPanels quick and easy.

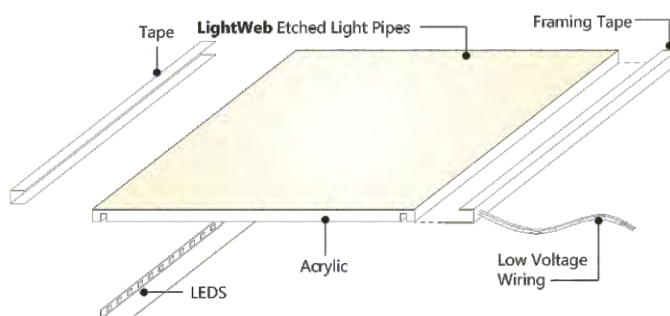
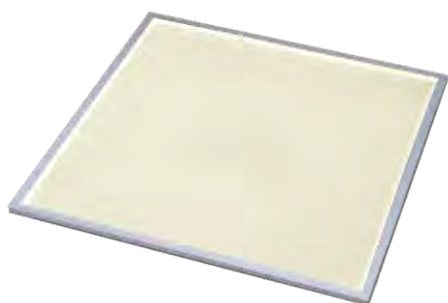






# BASIC LightPanel SYSTEM

The BASIC LightPanel is built for optimal design integration with a thin profile starting at 1/4" thin to provide an ultra-slim sheet of light. Low voltage LEDs are integrated with an optical grade etched acrylic to provide evenly distributed lighting. The BASIC Light Panel is a versatile light source available in customizable shapes and sizes to give every project even, uniform illumination.



The unique design of The BASIC LightPanel allows use in a large number of applications:



Hospitality



Retail



Healthcare



Residential



Accent Lighting



Branding



Commercial Interior



Millwork



Cove Lighting



Task Lighting



Custom Fixtures



Logos and Signage



Commercial Exterior

# General Specifications

## LIGHT WEB TECHNOLOGY™ :

3D etched patterns to evenly distribute light throughout the panel. Patterns available are GRID, DOT and MICRODOT™

## MAXIMUM SIZE :

120" x 80" (consult with eos specialist for recommendations with oversize panels); Ceiling application limits vary per installation method, please consult eos for details.

## MINIMUM SIZE :

1" X 2" (Ideal for Cove and Accent Lighting)

## THICKNESS:

1/4"-1/2"

\*Thickness is determined by panel shape, size and color temperature. Panel thickness does not include diffuser (additional 0.1" to total thickness)

## LONG LIFE :

Over 50,000 hours = Nearly 12 years based on 12 hours a day. Once installed, the LightPanel System is virtually maintenance free.

## POWER OPTIONS:

24VDC Standard and 24VDC High Power, 12VDC Available upon request

## DRIVER INPUT VOLTAGE :

100V TO 480V

## WATTAGE :

4.3 W/Ft. - 24V Standard Power (Optional: 12V)  
5 W/ Ft. - 24V - High Power  
\*ask eos specialist for information on RGB, RGBW and Color Tuning options.

## DIMMABLE :

The system is dimmable to <10% when matched with Dimmable Power Supplies

## LEDs :

ANSI Binned LEDs from Tier 1 Suppliers  
LED CRI > 80  
LED CRT - 1800K - 7500K

## WIRE GAUGE:

22 Gauge (AWG) for Color  
20 Gauge for Static White  
18 Gauge for Color Tunable

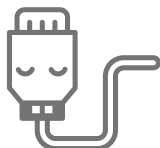
## HOSPITAL AND MRI SAFE :

The system contains non ferrous materials, making the LightPanel safe for MRI suites. The LightPanel Power supply must be installed remotely, up to 30 feet from the application.

## SERVICE AND INSTALLATION :

The LightPanel is field serviceable, typically LEDs can be replaced in the field. The LightPanel System can be predrilled by our production team with customer's specifications.

# Optional Specifications



## USB COMPATIBLE :

\* Max. Size 40" X 40"  
(wattage permitting)



## COMPATIBLE POWER SUPPLIES :

- 0-10V dimming • DMX/DALI
- Electronic low voltage (ELV)
- Remote control plug-in • Inline plug-in



## COLOR TEMPERATURES :

- 1800K • **2400K** • **2700K** • **3000K**
- 3500K • **4000K** • 5000K • **6000K\***
- **6500K** • 7500K • UV (Ultraviolet)

\*formerly 5300K

**Bolded** colors are commonly available in stock.



## MULTIPLE PANEL MOUNTING OPTIONS:

- Z-Profiles • Stand Offs
- Aircraft Cable Mounts • Pre-Drilled holes by factory
- Panels are drillable on site\* (use only eos suggested method in brochure)



## APPROVALS AND CERTIFICATIONS:

The LightPanel System is UL listed for Architectural applications and UL recognized for signage. All power supplies are UL / ETL listed.

<https://eoslight.com/user-guide/>



DOWNLOAD OUR  
USER GUIDE FOR WIRING &  
INSTALLATION INSTRUCTIONS





# Product Specification Ordering Form

NAME:

PROJECT NAME:

ADDRESS:

PHONE:

PROJECT LOCATION:

CITY:

EMAIL:

ANTICIPATED DELIVERY DATE:

ZIP CODE:

COMPANY NAME:

PROJECT SPECIFIER:

RUSH PROJECT: ☐ Yes ☐ No

	A	B	C1	C2	D	E	F	G	H	I	J	K	L
	↓	↓	↓	↓	↓	↓	↓	↓	↓	↓	↓	↓	↓
QTY	PANEL TYPE	VOLTAGE	DIMENSIONS (INCHES) TOP SIDE		LED SIDES	COLOR TEMP	LED POWER	DIFFUSER	CORD LENGTH	CORD LOCATION	CORD COLOR	POWER SUPPLY	IF CURVED PANEL SPECIFY RADIUS (INCHES)
5	LP	24V	48	50	4SL	2700	SP	DIF	CC6	TL	BC	010V	20

## A PANEL TYPE

### LP - BASIC

Lightpanel (use For Curved Panel As Well)

### LF - FRAMED

Lightpanel With C Channel 7/16"  
Lightpanel With J1 Channel 1/4"  
Lightpanel With J2 Channel 5/16"

### CP - CRYSTAL

Lightpanel

### CF - CRYSTAL FRAMED

Lightpanel With C Channel 7/16"

### WP - OUTDOOR

Lightpanel - Damp Location

### AM - ARCHITECTURAL MILLWORK

Lightpanel

## B VOLTAGE

24V - 24V (Standard)

12V - 12V (Optional)

## C DIMENSIONS

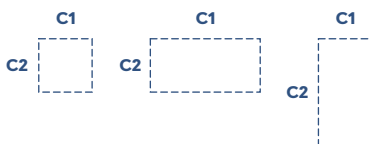
(Generated by Client)

C1 - Top Dimension

C2 - Side Dimension

\*For custom shapes, please provide:

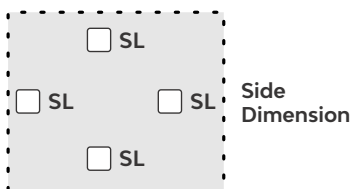
- Longest Outside Dimensions
- Drawing



## D LED SIDES

- 1SL - One Side
- 2SL - Two Sides
- 3SL - Three Sides
- 4SL - Four Sides

Top Dimension



\*Please note, the longest length is typically the LED side when selecting 1SL or 2SL

## E COLOR TEMP

- 1800 - 1800K
- 2400 - 2400K
- 2700 - 2700K
- 3000 - 3000K
- 3500 - 3500K
- 4000 - 4000K
- 5000 - 5000K
- 6000 - 6000K
- 6500 - 6500K
- 7500 - 7500K
- UV - Ultraviolet
- RGB - Color Changing
- RGBW - Color Changing + White (6000K, 4000K, 2700K)
- CT - Color Tuning (2400K to 6000K)

## F LED POWER

SP - Standard Power

HP - High Power

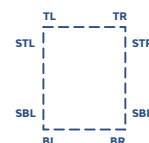
## G OPTIONAL 2MM DIFFUSION OPAL

YES - DIF NO - ND

## H POWER CORD LENGTH

SC - Standard - 9.8 ft.

CC - Custom Length \_\_\_\_ ft



## I POWER CORD EXIT

TL - Top Left Corner

TR - Top Right Corner

STL - Side Top Left Corner

STR - Side Top Right Corner

BL - Bottom Left Corner

BR - Bottom Right Corner

SBL - Side Bottom Left Corner

SBR - Side Bottom Right Corner

## J POWER CORD COLOR

BC - Black WC - White

## K POWER SUPPLY INFO

010V - 010V Dimmable Hardwire

ELV - Electronic Low Voltage Dimmable Hardwire

DMX - DMX /DALI

PI - Plug In, DC Jack

DPI - Dimmable Plug in w/ remote

